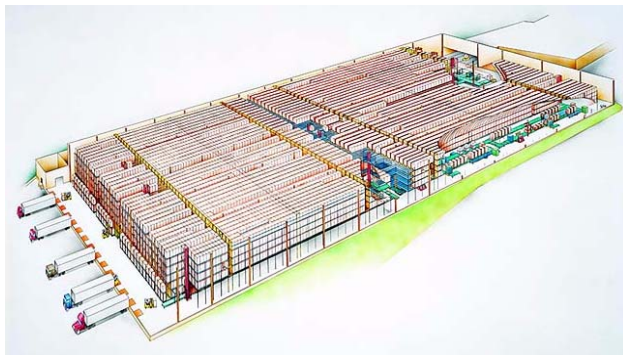


P-CAT

—innovative ACTIV System design solves logistics need for flexibility

RETROTECH Incorporated, manufacturer of ACTIV Systems for North America, recently developed and installed a modification to ACTIV's standard CAT (cross aisle transfer) design. Called a Pallet-CAT or P-CAT, the modification was developed to facilitate a Fortune 50 client's operational need to move unit loads internally on slipsheets and to ship on both pallets and slipsheets from their Michigan facility. The P-CAT, which accommodates both standard and custom captive pallets, enhances ACTIV's 'trailer staging' functionality and flexibility.

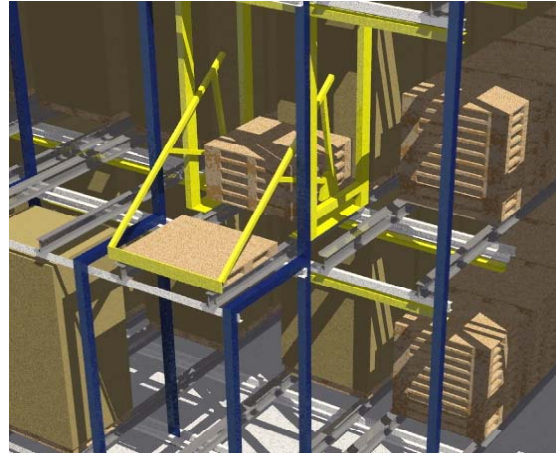
ACTIV is a unique stand-alone super high-density, dynamic storage (HDDS) technology that buffers, sorts, and pre-stages palletized unit loads within its rack footprint. ACTIV uses three bi-directional, single-axis devices—VTLs (vertical transfer lifts), DLTs (deep lane transfers), and CATs (cross aisle transfers)—to move loads into, through and out of its rack structure. ACTIV also supports, within its footprint, such value-added operations as picking and pick face replenishment. It is this unique functionality that has enabled ACTIV to gain a growing foothold in the high-volume, manufacturing DC environment where the sheer volume of shipping typically requires a fleet of forklifts to move product within



ACTIV System—Commissioned 1998

and from the warehouse. Because of its internal continuous-flow capability and its ability to pre-stage multiple trailer orders simultaneously, ACTIV significantly reduces the need for forklift handling.

In a typical operation, when a trailer arrives at the dock, the forklift operator uses an RF terminal on the forklift to sign onto the order. This sign-on signals the ACTIV System to begin indexing pallets forward from a multi-level staging slot to the rack face position, with each level indexing



P-CAT accumulates standard and custom captive pallets and delivers them to an ACTIV input point for reuse.

independently. Because ACTIV continually replenishes the staging lane face, the forklift operator is able to concentrate on rapid trailer loading, often in 30 minutes or less.

The P-CAT operates in its own aisle behind the rack face. For slipsheeted orders, a slipsheet truck slides the load off its captive pallet and pulls the load aboard the truck. The P-CAT then moves into position behind the lane face, retrieves the empty pallet, stacks it within itself, and moves out of the way so that the next palletized unit load can index forward. The P-CAT accumulates the captive pallets and, when full, delivers the stack to an ACTIV input point for reuse within the system.

RETROTECH's innovative designs continue to leverage technology to support the strategic goals of its customers with such functional tools as the P-CAT, integrated trailer staging, automated pick station replenishment, and flexible flow-path management. Even after system installation, the modular construction of the ACTIV technology allows distribution operations to change functions, modify flows, and increase rates with minimal modification and cost.

RETROTECH, Inc.

610 Fishers Run • P.O. Box 586 • Fishers, NY 14453-0586

Phone (585) 924-6333 FAX (585) 924-6334

E-Mail info@retrotech.com Web www.retrotech.com